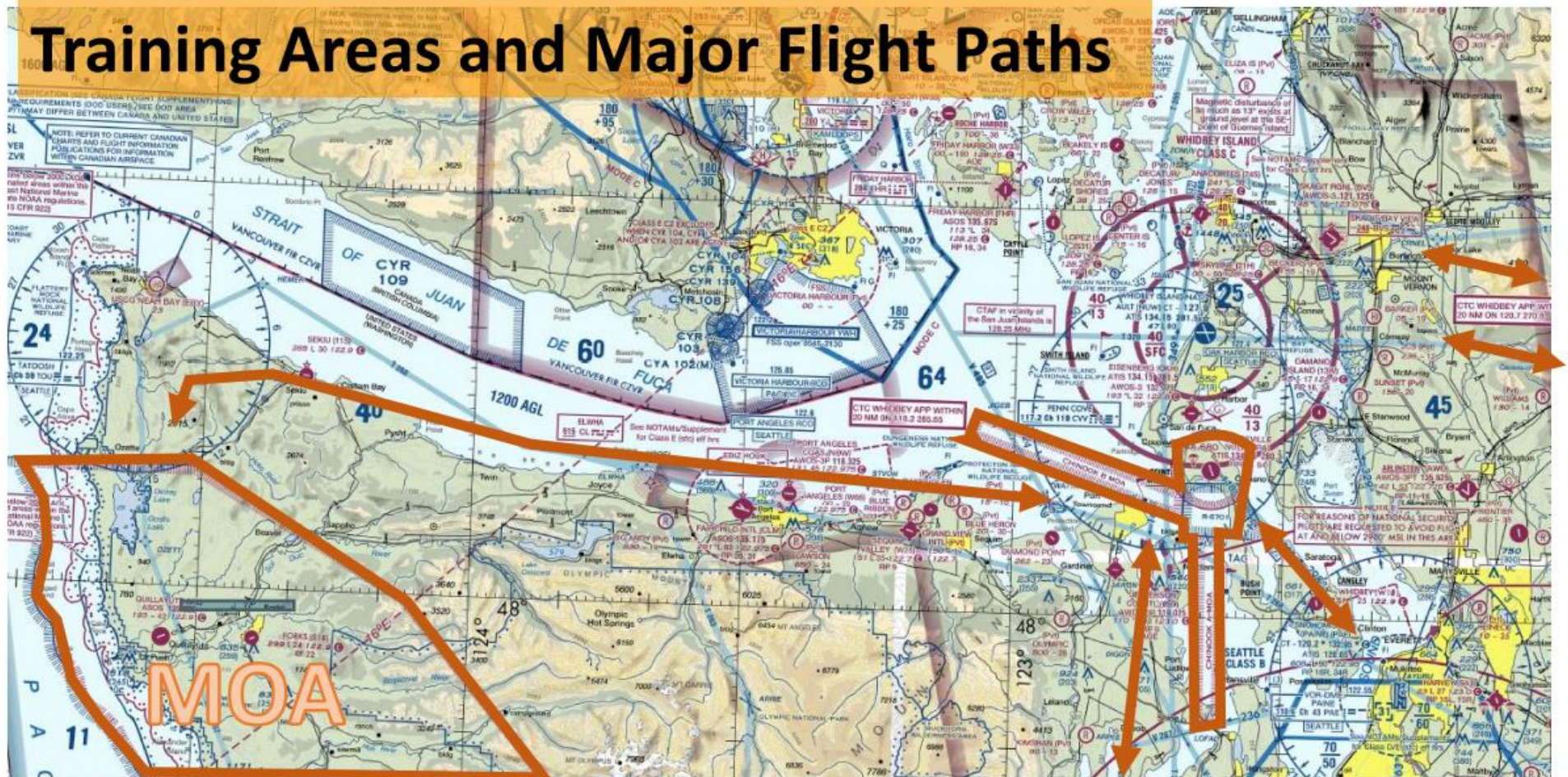


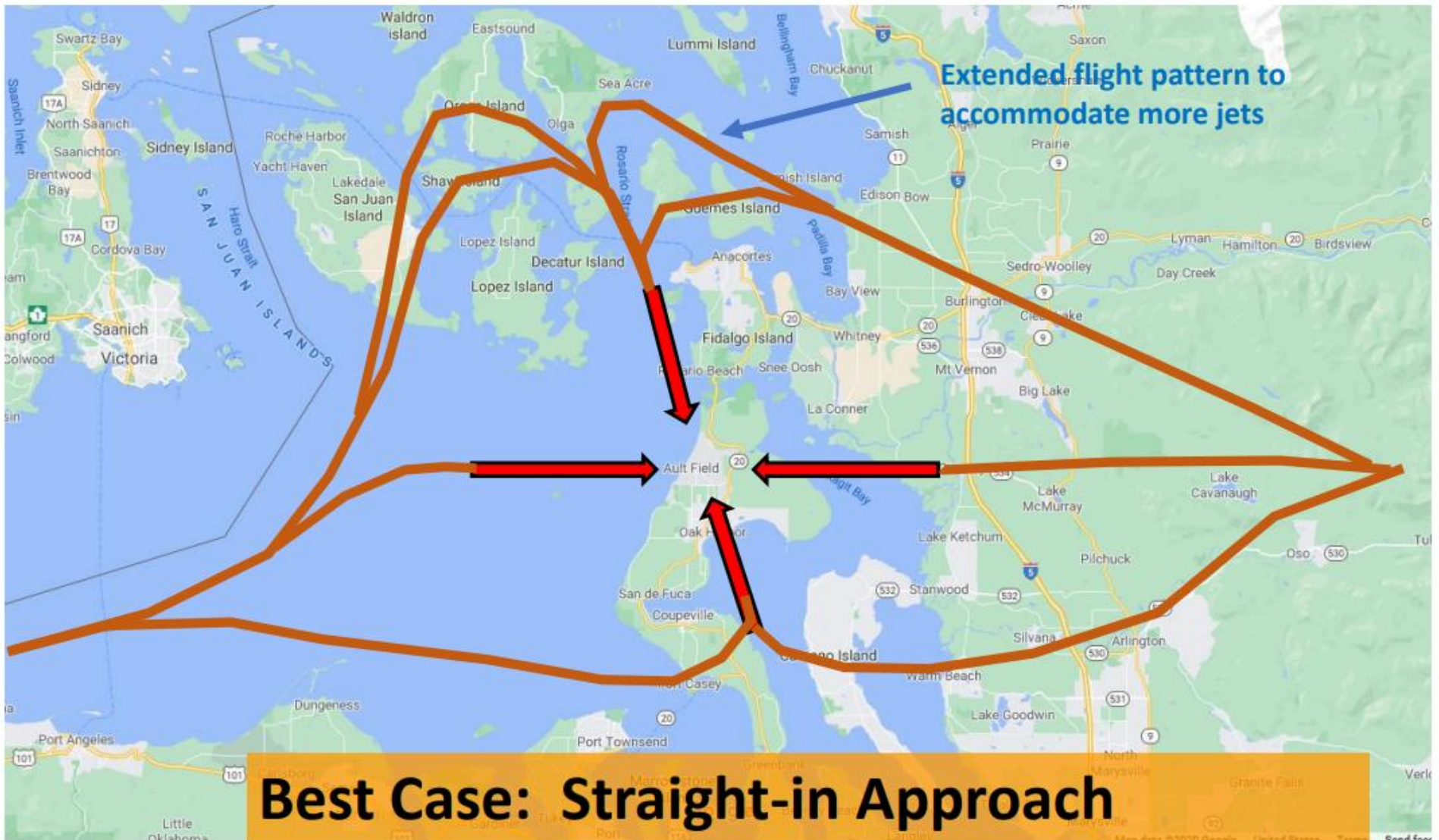
Training Areas and Major Flight Paths



Flight paths are subject to change, and often require more explanation than the map really tells us.

Ault Field: 4 possible runway approaches





**Some flights use alternative routes.
36 more growlers were added in 2019.**

San Juan Islands *Noticeable* Impact: Holding pattern and flight path

OAK HARBOR, WASHINGTON

RNAV (GPS) RWY 14

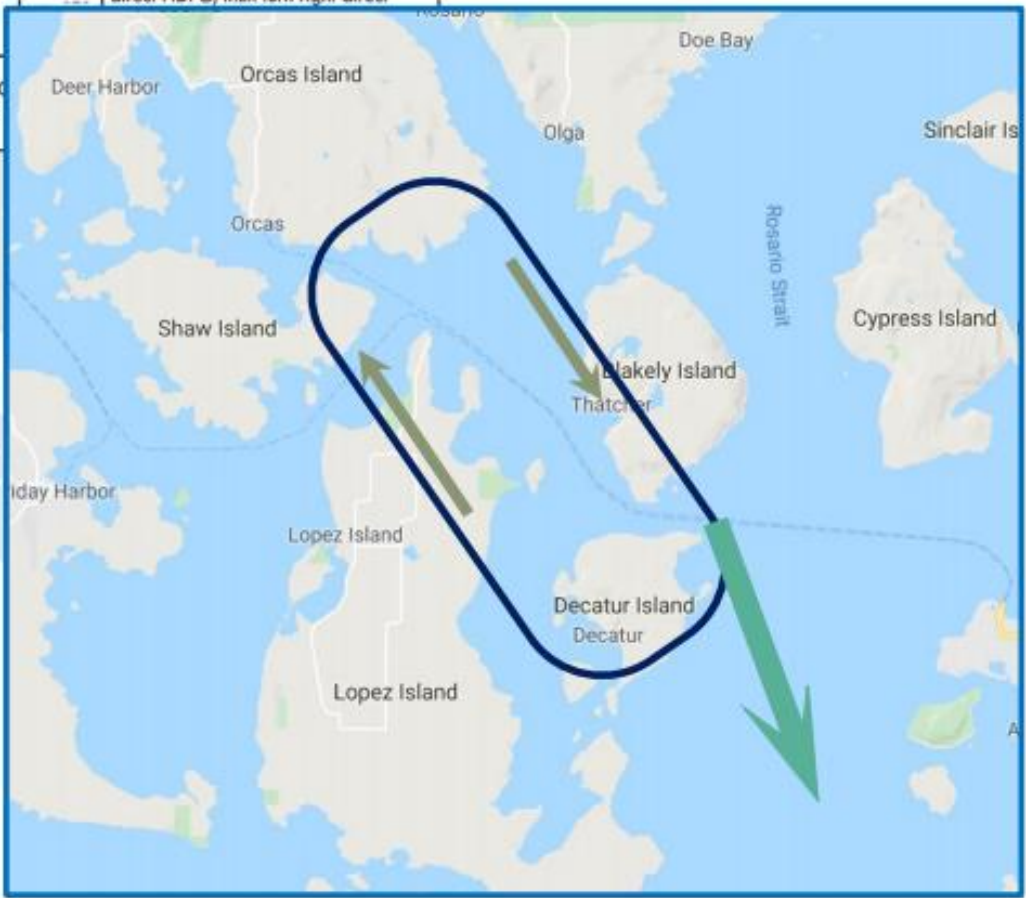
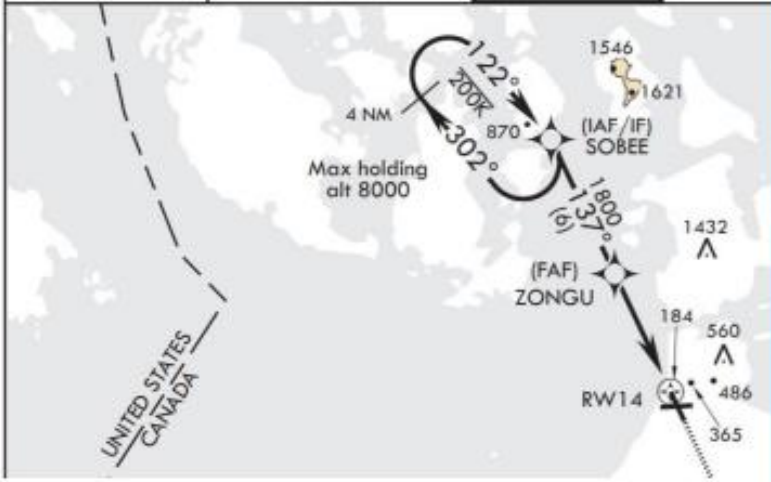
WAAS CH 50004 W14A	APCH CRS 137°	Rwy ldg TDZE Arprt Elev	8000 39 47
--------------------------	------------------	-------------------------------	------------------

AL-451 (USN) WHIDBEY ISLAND NAS (AULT FLD) (KNO...)

* When ALS inop, increase CAT ABCD vis to 3/4 mile.
 ** When ALS inop, increase CAT A vis to 3/4 mile, CAT BC vis to 7/8 mile, CAT D vis to 1 mile.
 *** When ALS inop, increase CAT AB vis to 1 mile, CAT CD to 1 1/8 miles.

ALSF-2 MISSED APPROACH: Climb to 3500 direct FIDPO, then turn right direct

ATIS 134.15 281.5	APP CON/DEP CON 118.2 285.65 W 120.7 270.8 E	TOWER 127.9 340.2	GND C 121.75
----------------------	----------------------------------------------------	----------------------	-----------------



**More Growlers =
more in the pattern**