



Sound Defense Alliance

Washington State

2019

Who We Are and What We Do

No New Jets, No New Flights

MISSION

The Sound Defense Alliance (SDA) works to protect our communities and natural environment from harmful and unnecessary impacts of military activity around the Salish Sea and the Olympic Peninsula.





The Pacific Northwest is one of the most beautiful, pristine places in the world



Some of the most diverse wildlife anywhere



**We love
living here**



And the military loves the Northwest, too.

\$5.5 BILLION
TOTAL PAYROLL

84,502
TOTAL PERSONNEL

Top Defense Personnel Locations

County	Total*	Active Duty Military	Civilian
Pierce	40,525	29,749	7,540
Kitsap	23,331	4,649	18,322
Island	7,960	6,852	821
Spokane	4,991	3,015	967
King	1,995	431	954
Snohomish	1,832	652	505
Walla Walla	1,503	ND	1,482
Yakima	627	110	232
Clark	428	47	51
Thurston	271	93	68

*Total also includes uniformed National Guard and Reserve units.

Washington is a
top target for
increased
military
presence

Washington Military Alliance (WMA) was convened in late 2012 and formalized under Governor Jay Inslee in September, 2014.



The WMA has become an advocate for military training and expansion in Washington

Local impact of expansion

- 36 more E/A-18G Growler jets to NAS Whidbey Island (NASWI) – 82 to 118 planes
- 95% of active Growlers based at NASWI
- 42% increase in all landing practices
- 25% increase in all Growler operations
 - 288% increase in operations at Outlying Field Coupeville (OLF)
 - 6% decrease in operations at main base

What is Lopez Island Impact?

Table 4.1-3 Comparison of Modeled No Action Alternative and Alternative 2, under All Scenarios (Average Year), Aircraft Operations at the NAS Whidbey Island Complex^{1, 5, 7, 8, 9}

<i>Aircraft Type</i>	<i>FCLP²</i>	<i>Other Operations³</i>	<i>Total</i>	<i>Total Change from No Action⁶</i>
<i>Average Year Scenarios for Ault Field</i>				
No Action	11,300	66,900	78,200	
<i>Alternative 2, Scenario A (20% of FCLPs at Ault Field)</i>				
Growler	5,900	67,900	73,800	
All Other Aircraft ^{3, 5}	0	14,200	14,200	
Total Airfield Operations	5,900	82,100	88,000	+9,800

- 9,800 More flight ops vs. “no action”
=> over 800/month increase

Why so loud and why here?



Noise is primarily from turbulence from the engines



Twin F414 Engines with **17,000 lb** of thrust ea.

Upgrade to F414 *Enhanced* with **26,000 lb** of thrust
(Growlers are not going to get quieter)

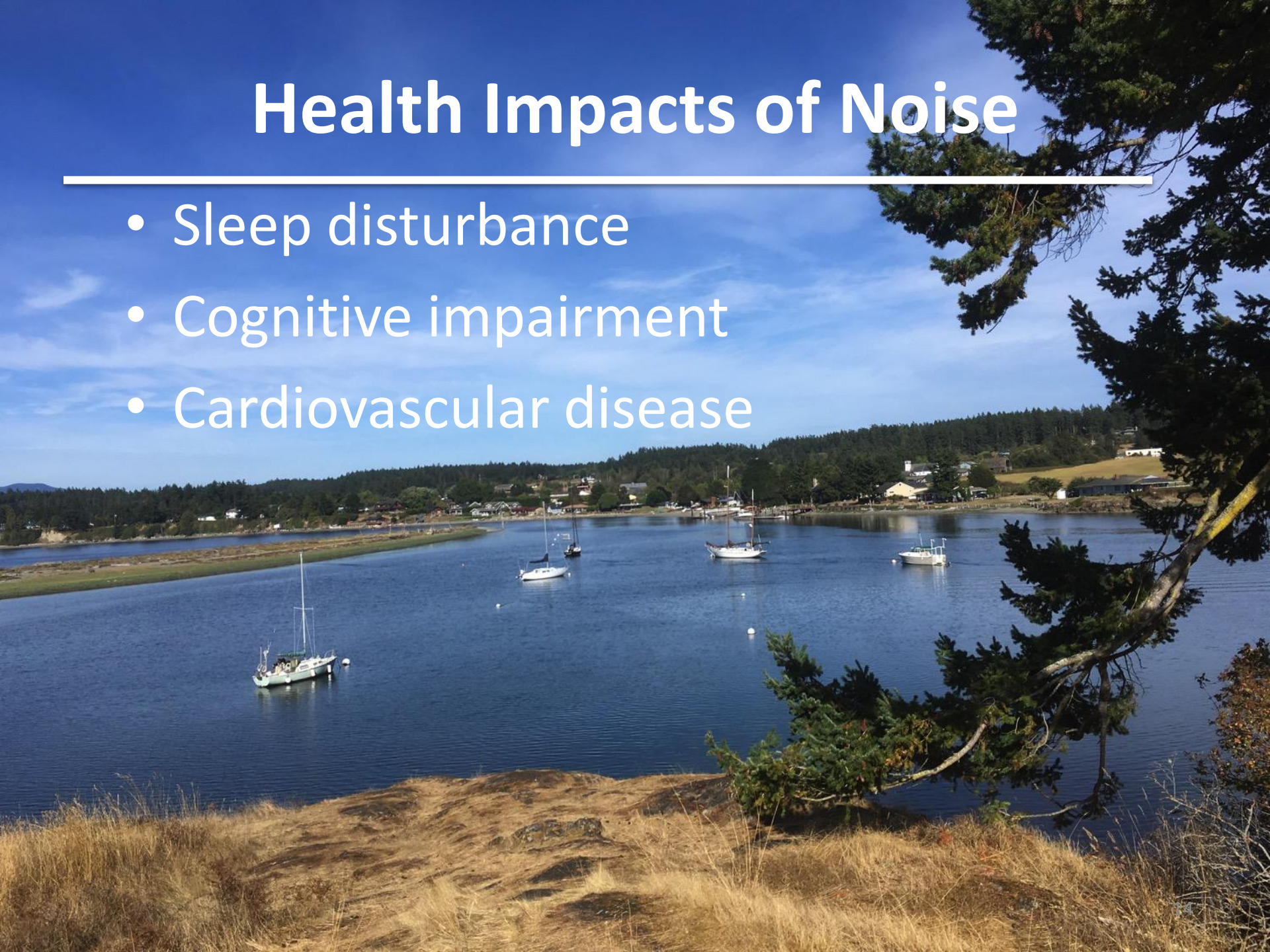
Why here?



- Being based at NAS-WI, Naval Base Kitsap or JBLM is considered a great assignment – and why not?
- Training locally is **more convenient**

Health Impacts of Noise

- Sleep disturbance
- Cognitive impairment
- Cardiovascular disease





Noise and Our Kids

- **Decreased reading comprehension**
 - Below average when exposure > 55 dB
 - Each 5 dB increase delayed reading age by 1-2 months
- **Impaired cognition and memory**

Environmental Impacts

- **Water contamination:**
 - Firefighting foam into groundwater if crash
 - Fuel dumps over water
- **Air pollution:**
 - Particulate matter + 60,000 tons more CO₂



Endangered species:

- Marbled murrelet
- Orcas (noise + CO₂)
- Spotted Owl



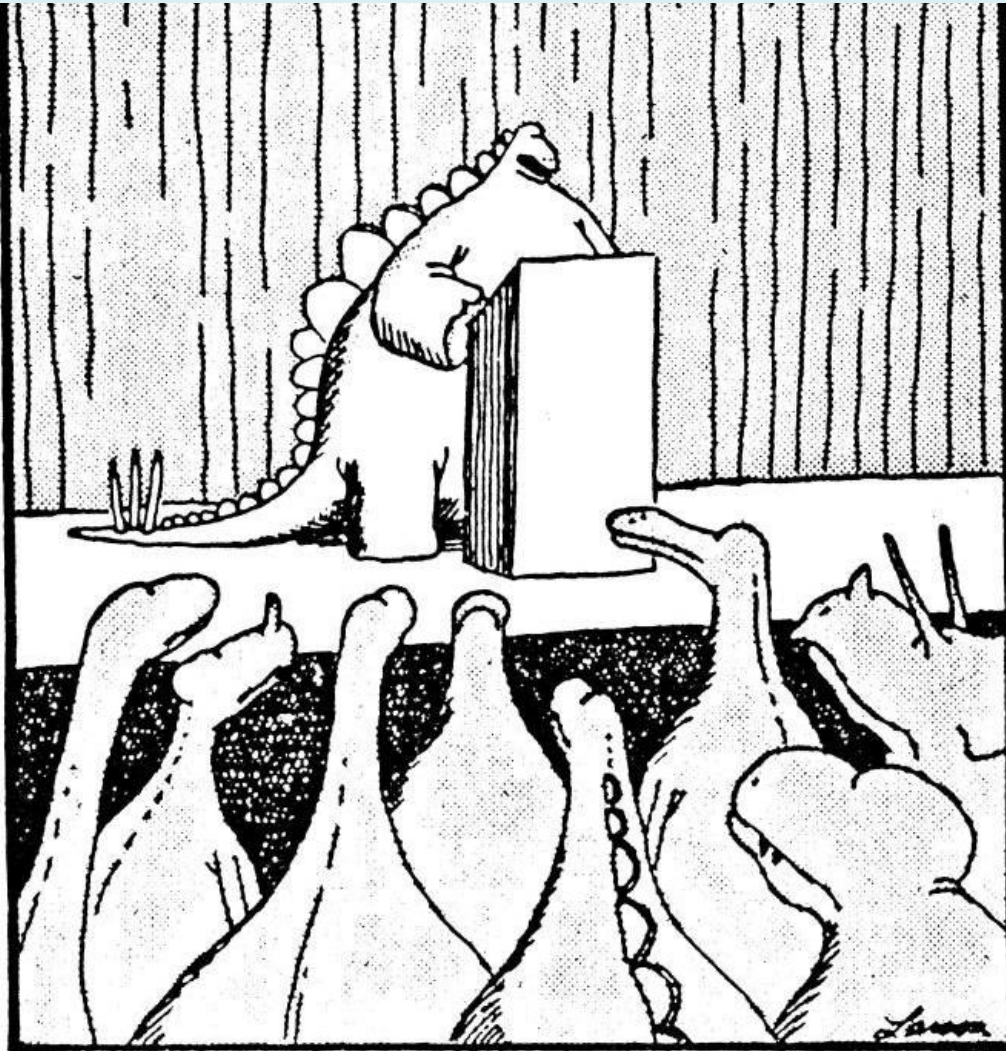
Economic Impacts

Noise lethal to outdoor-based economy
— Recreation (\$26 bn)

Tourism



Are we about to become extinct, too?



"The picture's pretty bleak, gentlemen. ... The world's climates are changing, the mammals are taking over, and we all have a brain about the size of a walnut."

Sound Defense Alliance

- Founders: 6 regional community groups
 - Whidbey: COER, CCA
 - Peninsula: Save the Olympic Peninsula
 - San Juans: Quiet Skies, Friends of the San Juans
 - Anacortes: Indivisible Fidalgo
- 16 affiliates across State
- 25,000 citizens....and growing
- www.Sounddefensealliance.org
- [www.Facebook.com/sounddefensealliance](https://www.facebook.com/sounddefensealliance)

1. Develop a **large** and **unignorable** presence to balance the voices promoting more military
2. Build **political power** to influence congressional action
 - Move Growler training to a harmless location
 - Cap activity at Ault Field to be compatible with the entire region
 - Cease Electronic Warfare training over the Olympic Peninsula
3. Become the “go to” **citizen voice** when decisions on military compatibility are being considered

Members and Affiliates

- Citizens of Ebey's Reserve
- Coupeville Community Allies
- Friends of the San Juans
- Indivisible Fidalgo
- Quiet Skies over San Juan County
- Save the Olympic Peninsula
- Ground Zero Center for Nonviolent Action
- Marrowstone Island Concerned Citizens
- National Parks Conservation Association
- The Next Generation Action Alliance
- The Orca Network
- Protect Olympic Peninsula (POP)
- The Sierra Club, North Olympic Group
- The Sustainable Economy Collaborative
- Veterans for Peace (Bellingham)
- Washington Environmental Council
- Washington Physicians for Social Responsibility
- Whidbey Environmental Action Network, (WEAN)
- Whidbey Island Friends (Quakers)
- Whidbey Water Keepers, (WWK)

The Solution

Step 1: Understanding the Adversary

If you want to catch a fish.....



US Navy

287 ships and subs

- 10 active nuclear-powered AC Groups
- 22 Frigates
- 68 Destroyers
- 68 Submarines

Naval Aircraft

	<u>2016</u>	<u>2017</u>
AEW, Command & Control (fixed wing)	79	81
Anti-Submarine (fixed wing)	3	0
Electronic Warfare (fixed wing)	146	145
Fighter/Attack (fixed wing)	1,020	1,030
Other transport (fixed wing)	82	77
Patrol (fixed wing)	120	125
Reconnaissance (fixed wing)	112	109
Tactical Airlift (fixed wing)	25	19
Tankers (fixed wing)	76	76
Training (fixed wing)	540	559
Utility (fixed wing)	36	32
Anti-Submarine (rotary wing)	1	1

10 Carriers on duty now – 4 more on the way

The Pride of the Navy

CARRIER STRIKE GROUP

- The Carrier Strike Group (CSG), composed of roughly 7,500 personnel, an aircraft carrier, at least one cruiser, a flotilla of six to 10 destroyers and/or frigates, and a carrier air wing of 65 to 70 aircraft. A carrier strike group is the largest operational unit of the United States Navy and comprises a principal element of U.S. **power projection capability.**

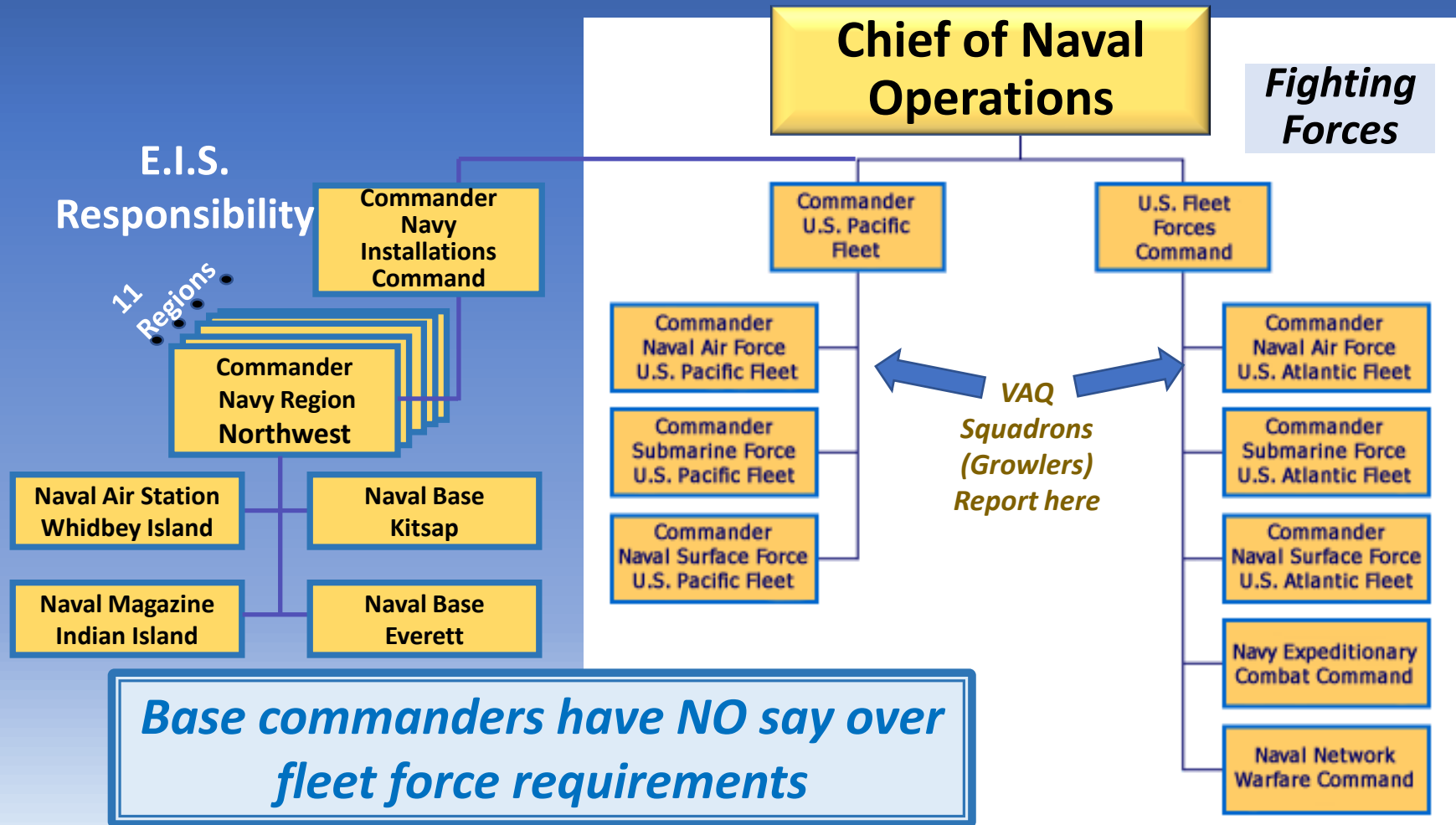
4-5 F-18E/F Squadrons	1 EA-18G Squadron	1 E-2	C-2A COD	MH-60S	MH-60R
48-60 Attack/Fighters	5 Electronic Warfare	Long Range Radar	2 Transport	2 Rescue/transport	1 Sub Hunter
F l x e d w i n g				H e l i c o p t e r s	

According the Chief of Naval Operations

The Navy isn't nearly big enough to accomplish the mission of a monopoly of power on the world's international waterways due to several years of serious underfunding.

Admiral John M. Richardson

Chain of Command



“Send your comments on the
Environmental Impact Statement”

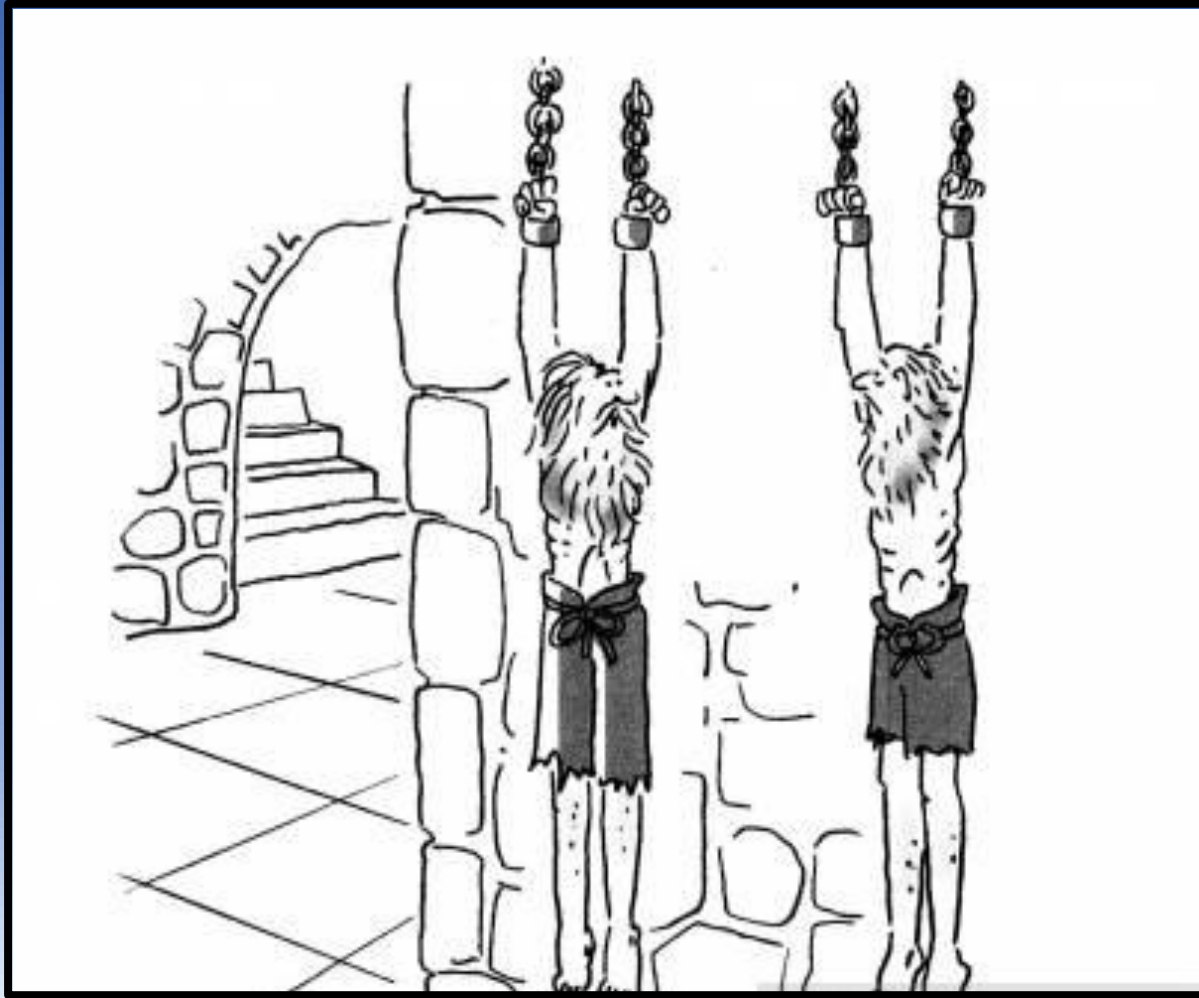


SOUND DEFENSE
ALLIANCE

Who can persuade the Navy?



So, our plan is to be rescued by Congress?



“Never doubt that a small group of thoughtful, committed, citizens can change the world. Indeed, it is the only thing that ever has.”

MARGARET MEAD

Step 2: Create a plan-

Bottom-up pressure

1. Build wide and strong base of voters and local officials – aligned and asking for the same actions

Large SDA membership, letters to editors, city/county resolutions, visits to state and federal officials by local leaders

2. Partner with WA State officials

Governor, Legislators, Attorney General, Dept of Health, Ecology, Fish and Game, State Historic Preservation Officer, etc.

3. Work Senate and Congressional staff

Find common ground, bring solutions and suggestions, meet F2F, coordinate with offices

Local supporters

1. Build wide and strong base of voters and local officials – aligned and asking for the same actions

Get active support from

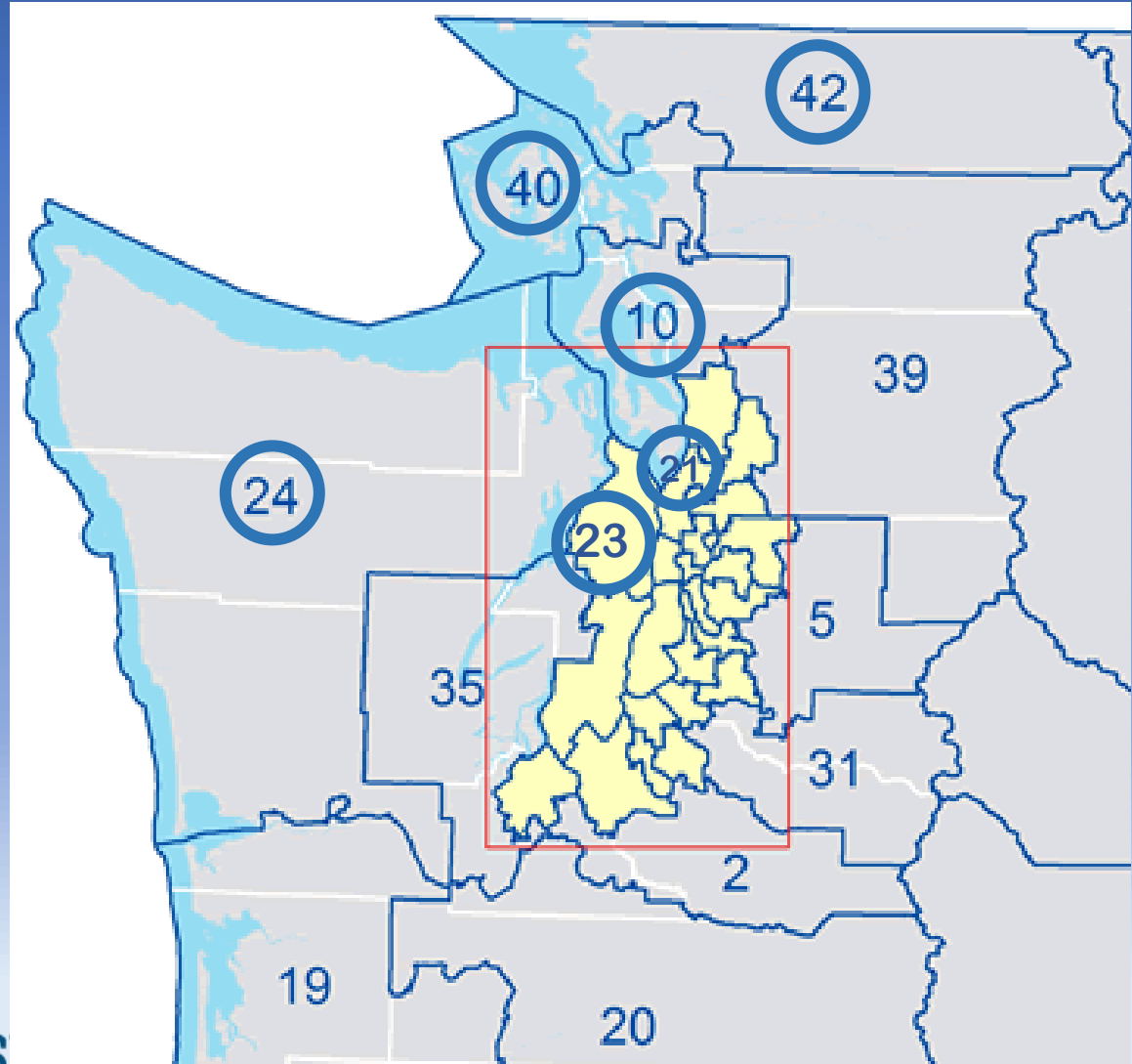
- Mayors
- County commissioners
- State reps. and senator
- Local non-profits & other citizen groups

Keep the issue out front

- Letters to Editor
- Postcard Parties
- Speak up at public events
- Recruit friends to do same

Eg: Resolution from city council & county commission

Key Leg. Districts to influence congressmen



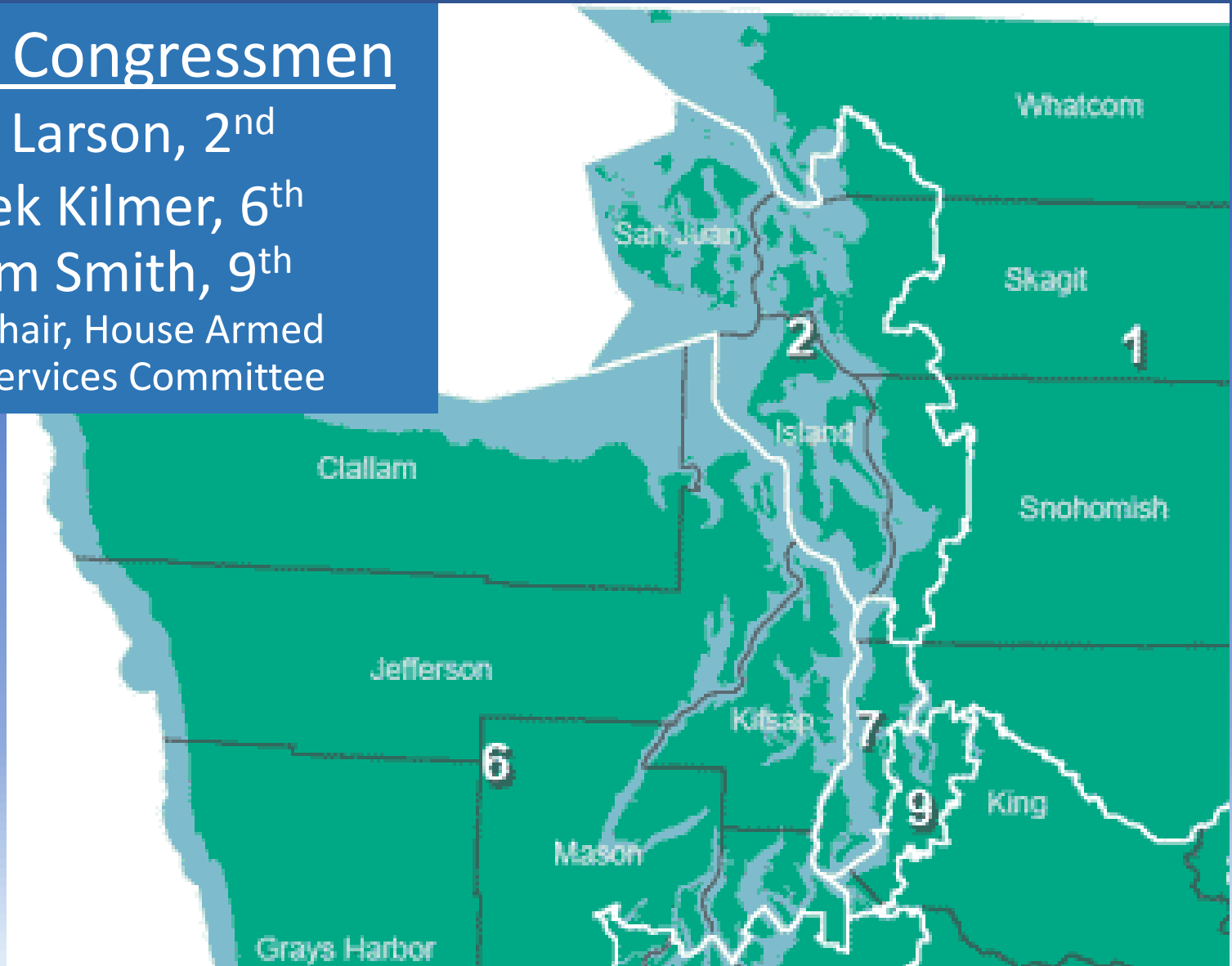
Key Congressmen

Rick Larson, 2nd

Derek Kilmer, 6th

Adam Smith, 9th

Chair, House Armed
Services Committee



SOUND DEFENSE
ALLIANCE

No instant political answer

- Significant obstacles:
 - Military is viewed as “untouchable”
 - Convenient PR at the ready:
 - “A matter of national defense”
 - “Our pilots and troops deserve the best training”
 - “Reducing readiness can cost American lives”
- Build a political power base over time

Basic Strategy

- Join the conversation as a “reasonable” voice
- Propose solutions to mutual problems
- Establish track record of small wins
- Show ability to “Rally the base”
- Undermine the “alternative facts” put forth as facts
- Educate the public and elected officials about the “facts on the ground”
- Expose the DoD as out of touch and unreasonable
- **Congress takes action (eventually)**

Current Congressional Happenings

- Rep. Kilmer has introduced a proposal to REQUIRE noise monitoring and public access to the data
- Proposal is attached to the **National Defense Authorization** bill that funds DoD
- Reps. **Larson** and **Smith** need to support this and ask for support from the rest of the delegation
- Senator Cantwell's office is coordinating with Kilmer's to garner support in the Senate

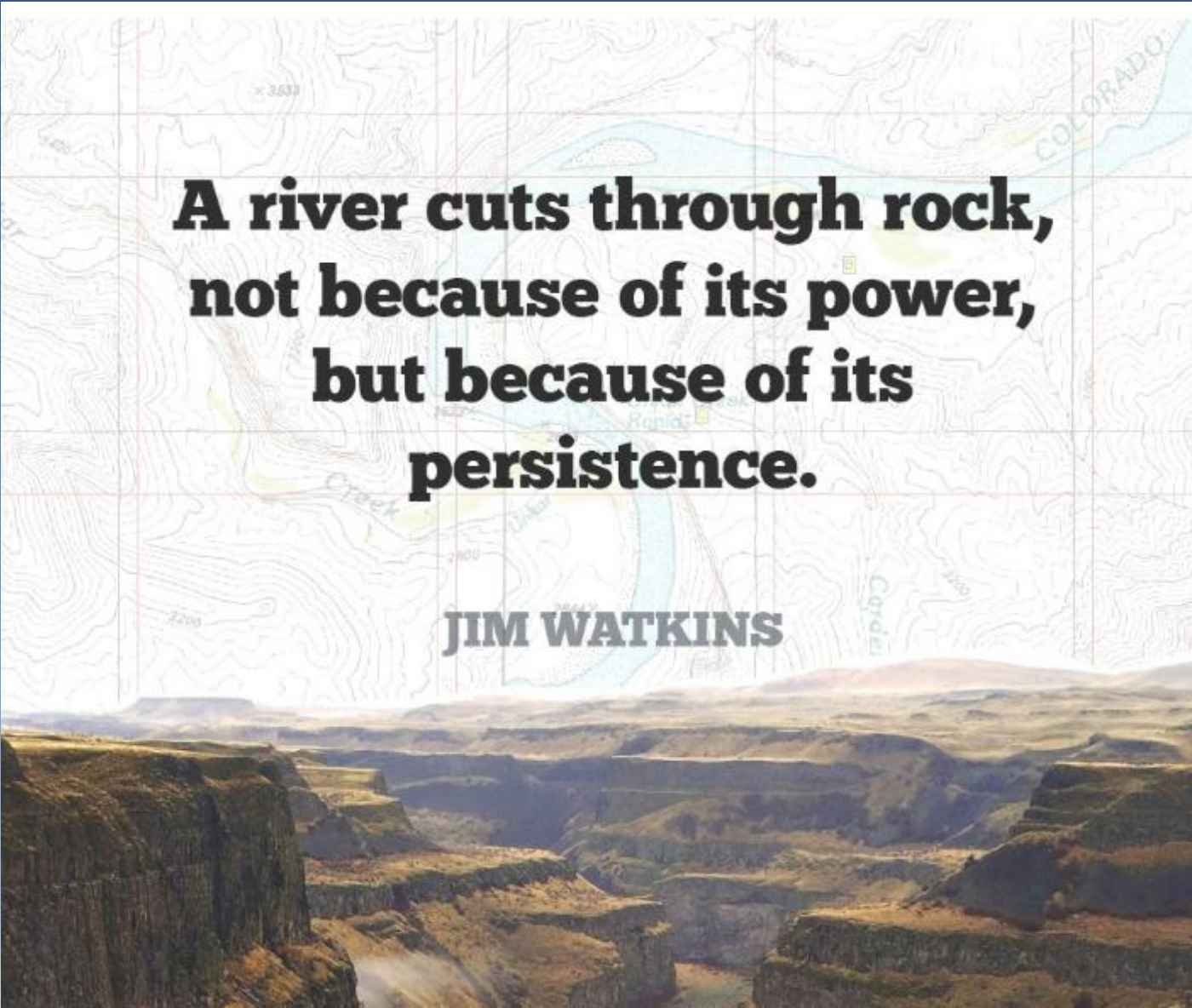
Why Noise Monitoring?

- Navy has refused – Congress overriding the Navy at our request is a WIN
- Real time data exposes the noise issue with data
- Data can support future actions
 - Member/other lawsuits
 - Claims for economic damages
 - EIS noise modeling was flawed – data doesn't match
- Brings credibility to SDA claims and citizen experience
- Leads to next ASK of Congress: **Noise Mitigation**

What needs to happen now?

- Urgent: Rep Larson needs to hear from EVERYONE:
Real time noise monitoring & open data access
 - Constituents
 - Mayors
 - Council members
 - Leaders of citizen groups
 - State legislators
 - Postcards, letters
 - Letters to Editors
 - Resolutions
 - F2F meetings/townhalls
 - Phone calls
 - Rallies at Larson's offices

Ditto for Senators Murray and Cantwell, Gov. Inslee

The image is a composite. The top half features a topographic map with contour lines, a river, and labels like 'COLORADO', 'Creek', 'Rapid', and 'Cayden'. The bottom half is a photograph of a deep, layered canyon with a river at the bottom. The text is overlaid on the map portion.

**A river cuts through rock,
not because of its power,
but because of its
persistence.**

JIM WATKINS

THANK YOU

Want to do more?

- **Volunteer coordinators** - Port Townsend, Coupeville, Port Angeles, Langley, Anacortes, Port Hadlock, Forks, Omak
- Contact people expressing a desire to “do something” and find a good fit with their skills and interests – such as
 - Write Letters to the Editor
 - Organize and drive city/county resolutions asking the Navy to move the Growler training away from our valued tourist destinations
 - Sign up more people to send cards, write letter, etc.
 - Document stories of Growler-disruption (health, economic harm)
 - Organize a group to visit Kilmer’s office to thank him for his support and request he continue to “have our back”
 - Host events
 - Postcard parties
 - showing of *Plane Truth* documentary about the Growlers
 - Fundraisers – benefit concerts, organize an auction, booksale,

Volunteer Opportunities

- **Database administrator** – work from home and occasionally in Coupeville
- Using *EveryAction* enter new members, send out notices, create lists for committees with sorting/filtering to match volunteers with tasks
- **Grant Writer** – work from home with occasional visits to foundations and other meetings
 - Research funding sources and write proposals for grants
 - Create relationships with foundations and large donors whose interest align with the SDA
 - Track proposals and forecast funding
 - Identify sister organizations across the country that could help with funding sources

Leadership Opportunities

Chair, Medical Advisory Board

Medical professional to head up advisory board focused on the health impacts of the Growler training

Chair, Technical Advisory Board

Engineering, aviation or other technical professional to focus on the technical aspects of the impacts of Growlers

Chair, Biological Impact Advisory Board

Biology, environmental ecosystem – land and/or marine professional to focus on the impact of the Growlers on wildlife -land, sea and air.

Dispelling Navy Myths

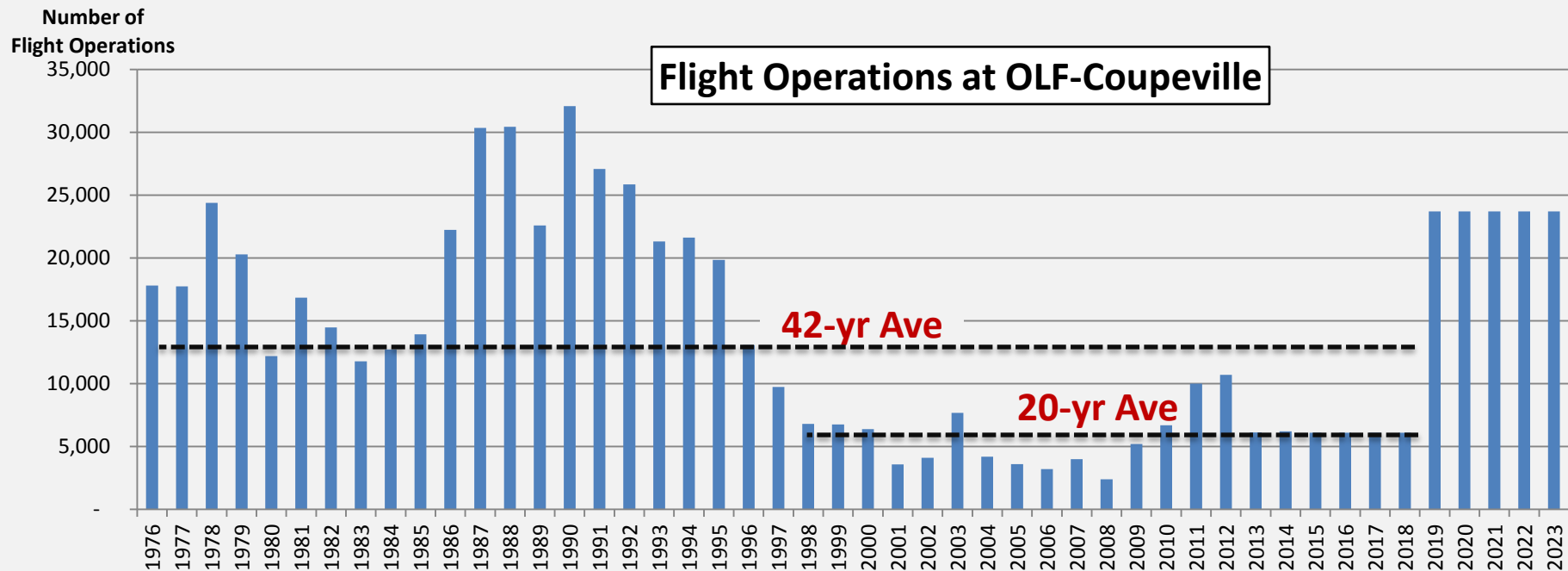
- This is just a return to what the Navy has done in the past – all the complainers are newcomers who should have known better.

Flight operations at OLF Coupeville

Navy Claim: A return to historical usage

20-year average: 5,795 - 42-year average: 13,198

New Plan: 24,100



Dispelling Navy Myths

- The Growler is not as loud as the Prowler was. The Navy has mitigated noise by taking the Prowler out of service and replacing it with the Growler.

The Growler is quieter than the Prowler?

Why does the noise model used show the opposite?

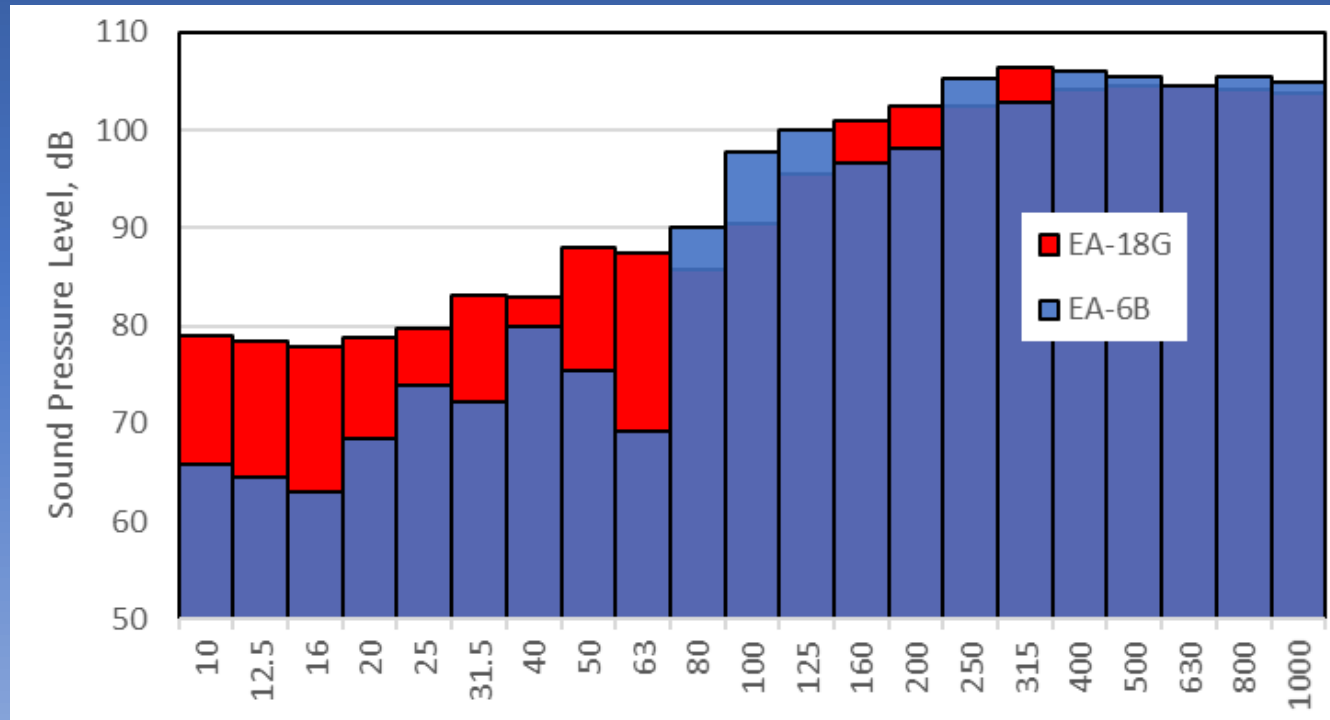


Figure 10-1 Low Frequency One-Third Octave Band Spectral Comparison for the EA-18G and EA-6B for MIL Engine Power

NAS Whidbey Island Complex Growler FEIS, Vol 2, Page A-234

Dispelling Navy Myths

- OLF is like landing on a carrier – near the water and 60 feet higher than the surrounding terrain.



7/2016

OLF Runway 14 Approach Path

Rhododendron
Park

Pacific
Rim Inst.
Parker Road

20

Ryan's
House

300
ft

Coupeville Solid
Waste Complex

20

500
ft

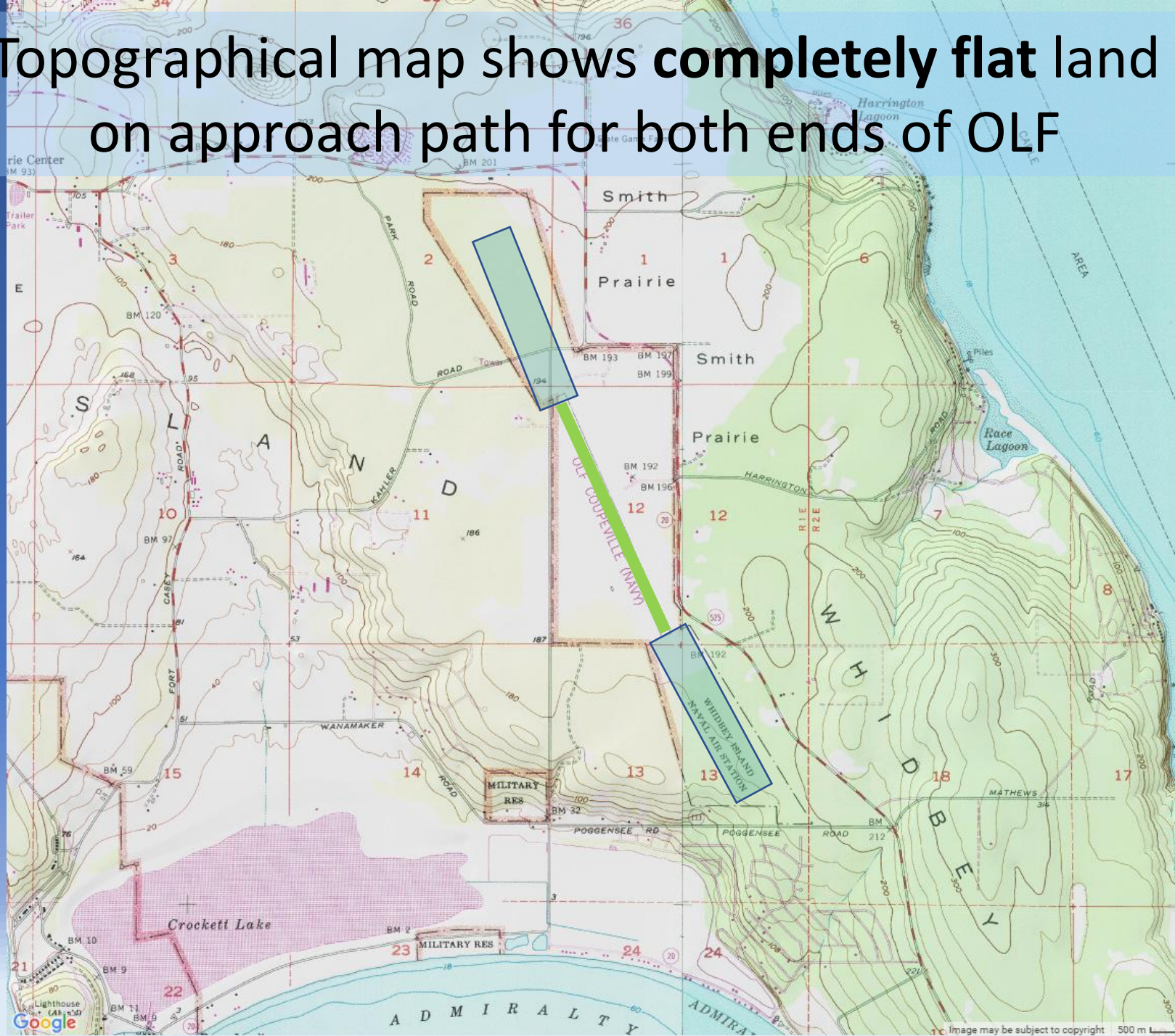
W 50 N

734 ft

Image © 2016 DigitalGlobe
Image USDA Farm Service Agency

Google Earth

Topographical map shows **completely flat land** on approach path for both ends of OLF



Other slides

IDEAS FOR POSTCARDS

- Speak personally about how the Growler noise impacts your body/home/peace of mind/sleep
- To the Governor, mention its impact on Global Climate Change
- To Cantwell, mention how it impacts your enjoyment of Point Colville, Iceberg, Watmough, etc.—all parts of the National Monument
- To Larsen—there has still been no noise mitigation!
- No New Jets/No New Flights



- A Growler EA-18 produces 12.5 metric tons of CO₂ per hour
- 1 hour produces 20% more CO₂ emissions than the average Washingtonian in a whole year (including all residential, commercial and industrial emissions).
- You can drive 38 Toyota Prius's from Anacortes to New York City and produce less emissions than a Growler makes in an hour.
- One hour of Growler flight emits as much CO₂ as 7 average hours of electricity consumption from all of San Juan County
- A Growler costs over \$31,500 per hour to operate
- Flying a Growler 1.9 hours is the same cost as an average Washington State elementary school teacher's salary of \$59,700.

Noise Impacts

- Navy will fly any day of the week
- Actual noise not measured by Navy
- Every 3dB increase is a doubling of sound

Navy's Models of Peak Noise

- Coupeville Elementary
98 dBA – 367x/year
- Deception Pass State Park:
110 dBA – 161x/year
- Anacortes High School
93 dBA – 112 x/year

Navy's Models of Peak Noise

- Port Angeles - 75 dBA – 208x/year
- Port Townsend Park - 85 dBA – 24x/year
- San Juan Islands National Monument
- 95 dBA – 372x/year
- Little modeling outside Whidbey

Actual Noise Monitoring

- National Parks @ Ebey's – **114 dBA**
- Exceeded **70 dBA** - **281 times** in 1 mo
- Navy modeling – **88 dBA, 30x/month**

FEIS assumes all learning takes place indoors— Growing Farm to School programs, Recess, Sports





**Coupeville Elementary to experience
two more sound events per hour per
Final EIS**

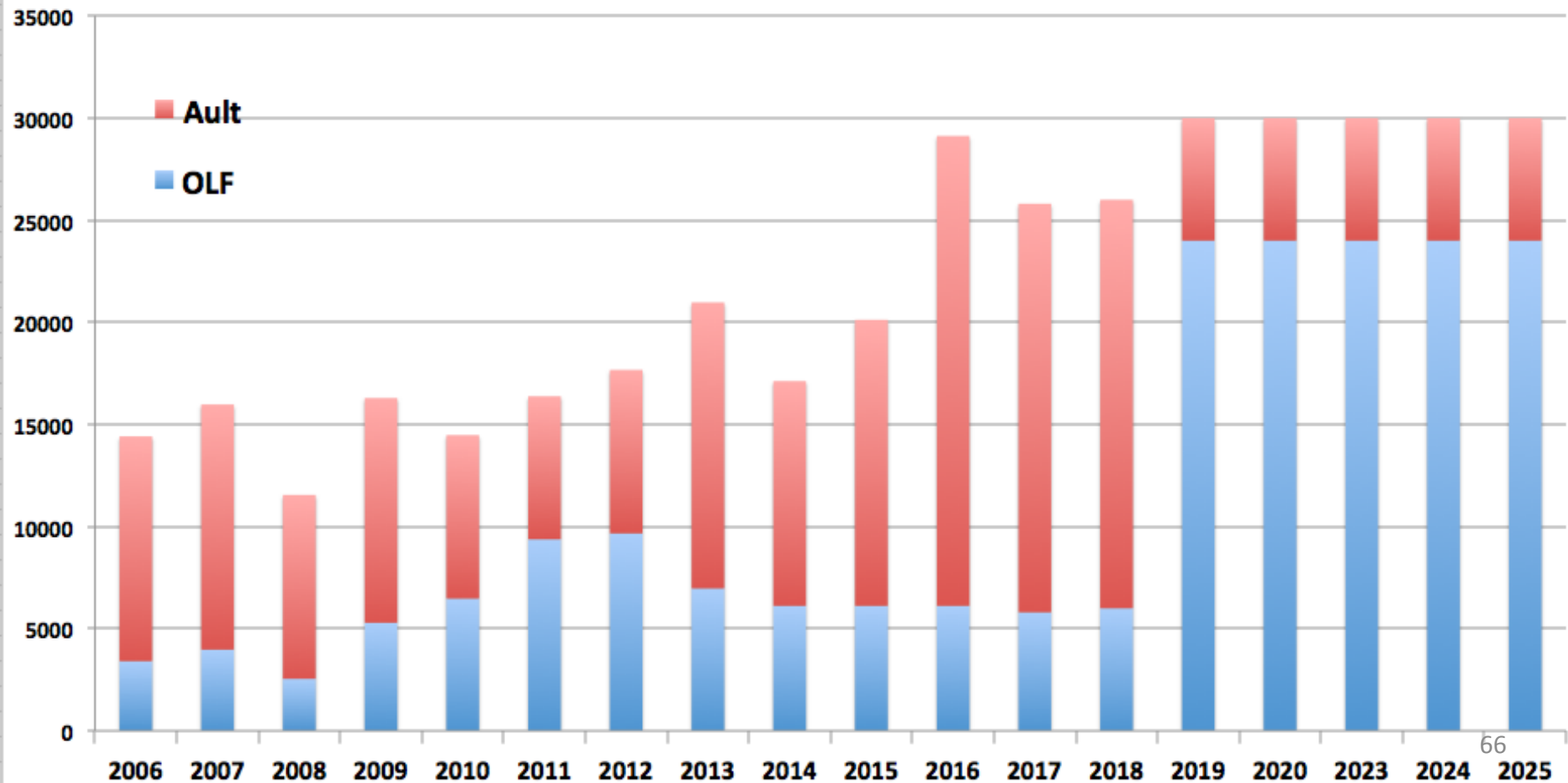
Modeling: 95 dBA – 178x/year



Agriculture

IMPACT ON ONE COMMUNITY: COUPEVILLE, WA

FCLP Airfield Operations - Ault Field & OLF Coupeville
Since Growler Introduction
2006 - 2018, Projected Thru 2025



Impacts to Central Whidbey

- FCLPs increase 288% (4-fold)
 - 6,100 operations to 23,700
- At 120 flight days/year – 200 operations/day
- NASWI outsourcing 80% of FCLPs to OLF (Outlying Field)
- Accident Potential Zones likely for Runway 32

1940s Coupeville Outlying Field (OLF) Determined Unsafe

- Operating off 1986 safety waiver
- 2/3 mile too short; poor glide slope
- Inadequate clear zones; SR 20 in runway zone
- Only 2% of required buffer for outlying fields
- To bring to standards, either
 - Move SR 20, or condemn neighborhoods



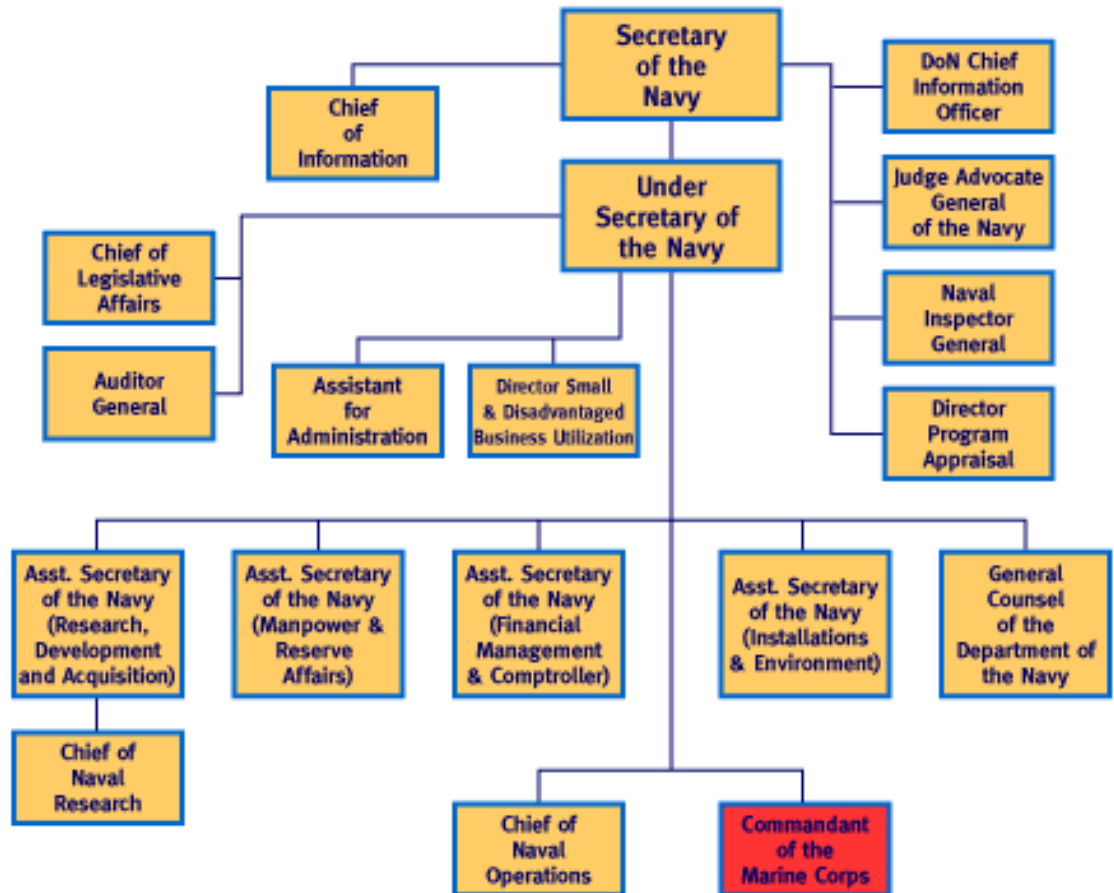
And for the
Olympic Peninsula?

What More is
Coming Your Way?

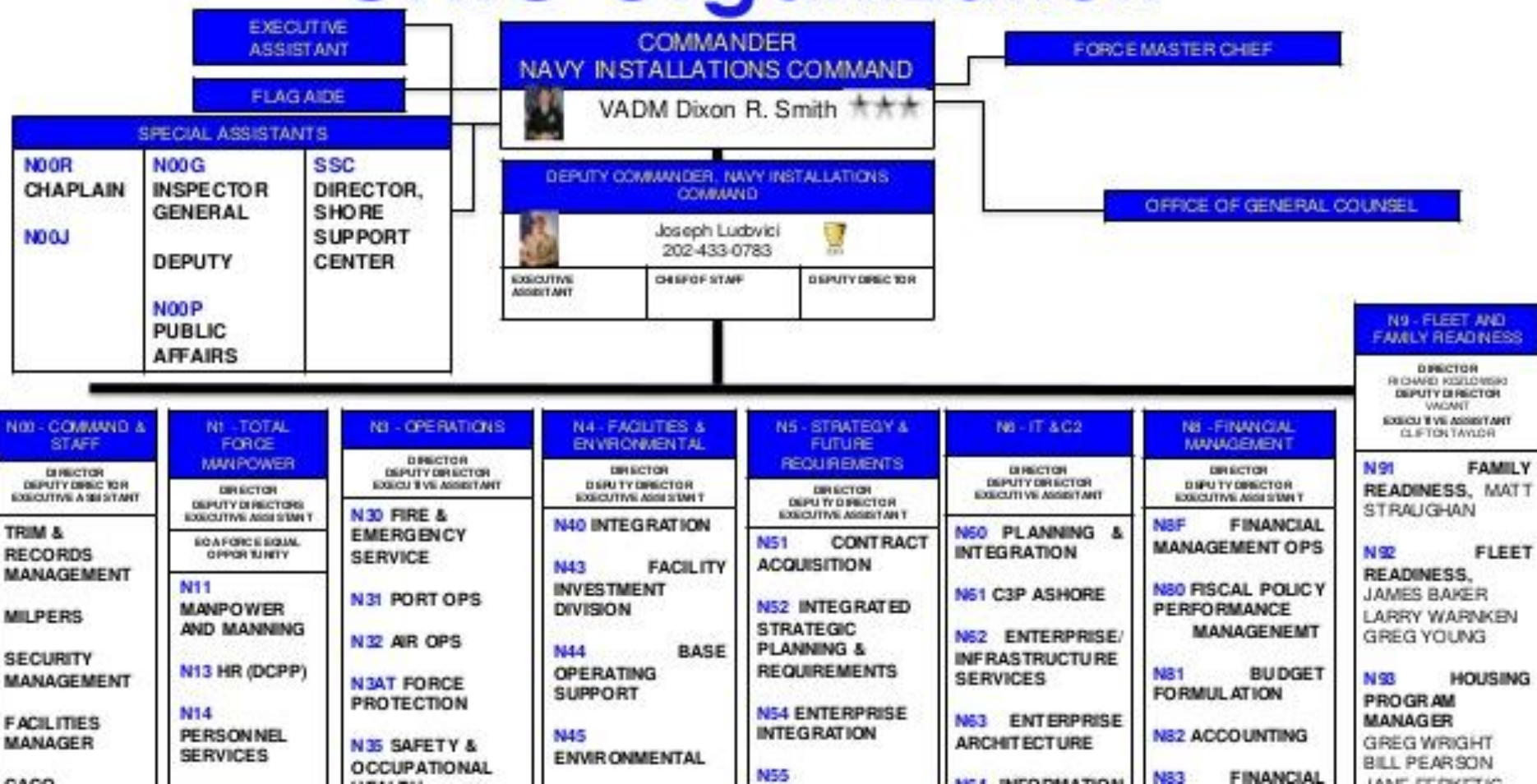
Stay In the Loop

- Like and **Share** on Facebook
 - www.Facebook.com/SoundDefenseAlliance
- Sign up for emails
- Websites
 - www.SoundDefenseAlliance.org

Dept. of Navy Top-Level Organization



CNIC Organization

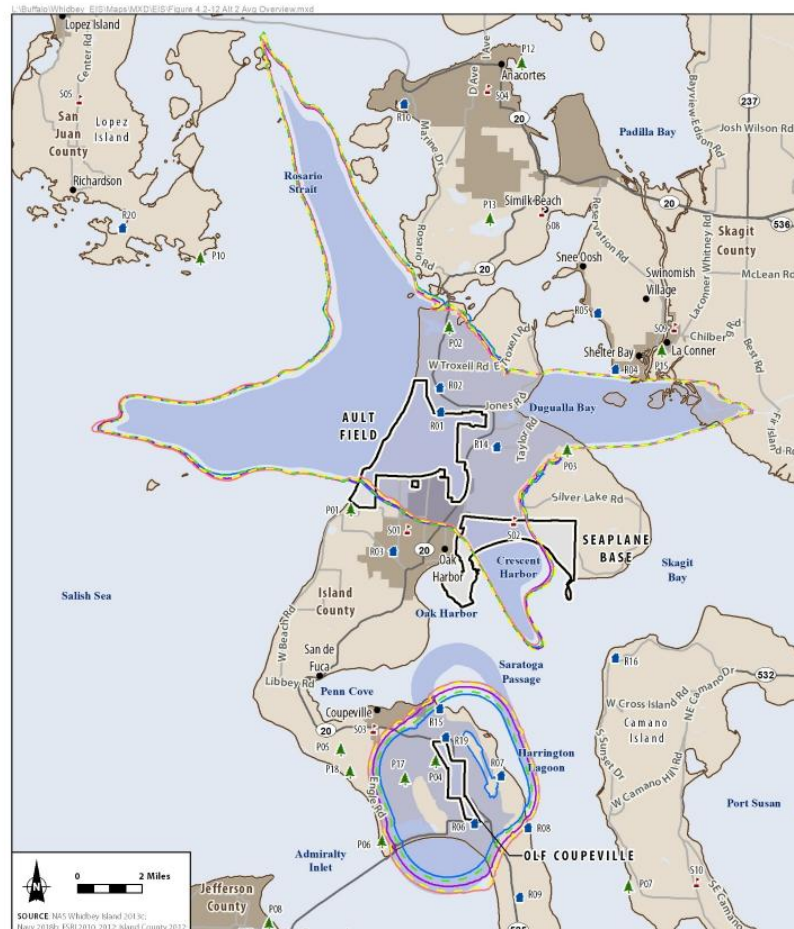


**SOUND DEFENSE
ALLIANCE**

Noise? What Noise?

- According the EIS, only portions of Whidbey would be in the “noise contour.”
- Lopez Island, Anacortes, La Conner are unscathed

Actual Experience
does not align with
EIS conclusions



How can you help?

- **Learn** the facts – engage your elected officials
- **Spread** the word to friends and neighbors: SDA can be our voice
- **Volunteer** – there is ALWAYS work to be done
- **DONATE** – influencing elected officials is not FREE



SOUND DEFENSE
ALLIANCE

US Navy Nuclear-powered Carriers

3 of 10 US carriers are based in Bremerton

Ship	Commissioned	Refuel, Ovhl	Homeport
<i>Nimitz subclass</i>			
Nimitz	3-May-75	1998–2001	Naval Base Kitsap, Bremerton, Washington
Dwight D. Eisenhower	18-Oct-77	2001–2005	Naval Station Norfolk, Norfolk, Virginia
Carl Vinson	13-Mar-82	2005–2009	Naval Base Kitsap, Bremerton, Washington
<i>Theodore Roosevelt subclass</i>			
Theodore Roosevelt	25-Oct-86	2009–2013	Naval Air Station North Island, San Diego, California
Abraham Lincoln	11-Nov-89	2013–2017	Naval Station Norfolk, Norfolk, Virginia
George Washington	4-Jul-92	2017–	Naval Station Norfolk, Norfolk, Virginia
John C. Stennis	9-Dec-95		Naval Base Kitsap, Bremerton, Washington
Harry S. Truman	25-Jul-98		Naval Station Norfolk, Norfolk, Virginia
<i>Ronald Reagan subclass</i>			
Ronald Reagan	12-Jul-03		Yokosuka Naval Base, Yokosuka, Japan
George H.W. Bush	10-Jan-09		Naval Station Norfolk, Norfolk, Virginia